



SMT. J. A. PATEL MAHILA SCIENCE COLLEGE MORBI

PRESENTED BY:

NENCY PATEL, RISTA ANDARPA
TULSI PATEL, MOHINI BHATASANA

GUIDED BY:

DR. DEEP BHADJA
PRO. AARTI RANKJA, PRO, NIKUNJ MERJA

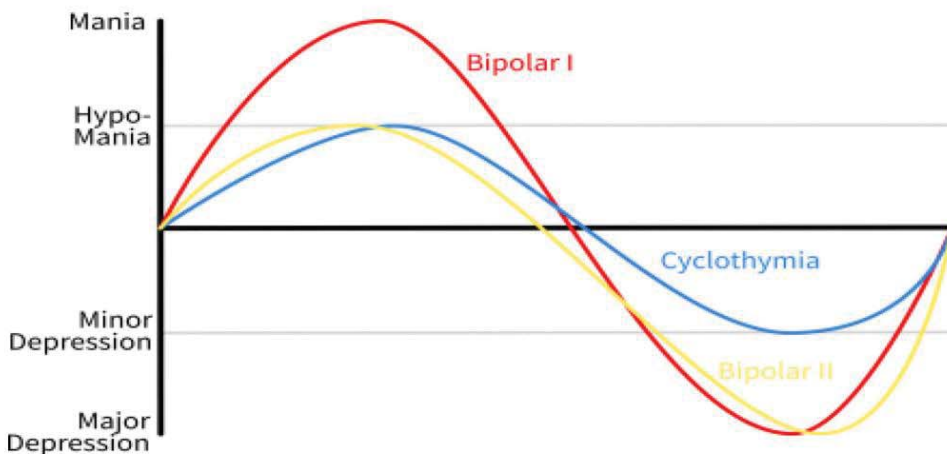
BIPOLAR DISORDER

INTRODUCTION

- Mood disorder are among the most frequent psychiatric illnesses both in the community and in psychiatric settings.
- Patients commonly present with features of either mania or depression and sometimes both.
- These disorder virtually always result in impaired interpersonal social and occupational functioning
- In a review of studies prior to 1990 the peak age of onset of bipolar disorder was between 15 and 19 year old.

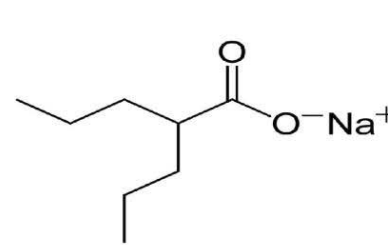
SYMPTOMS

- overexcited state is called a **manic episode**, and a People with bipolar disorder experience unusually intense emotional states that occurs in distinct periods called "**mood episode**" an overly joyful or n extremely sad or hopeless state is called a depressive episode.
- Sometimes, a mood episode includes **symptoms of both mania and depression**. This is called a **Mixed state**.

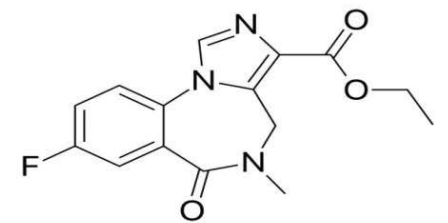


TREATMENT

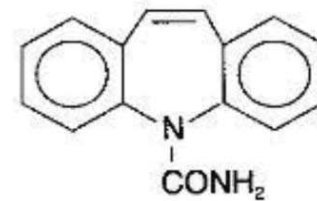
- **Mood stabilizer**
Valproate Carbamazepine
Lamotrigine Lithium
- **Antidepressive**
- **Benzodiazepines**
- **Antipsychotic**
- **(ECT) Electroconvulsive therapy**



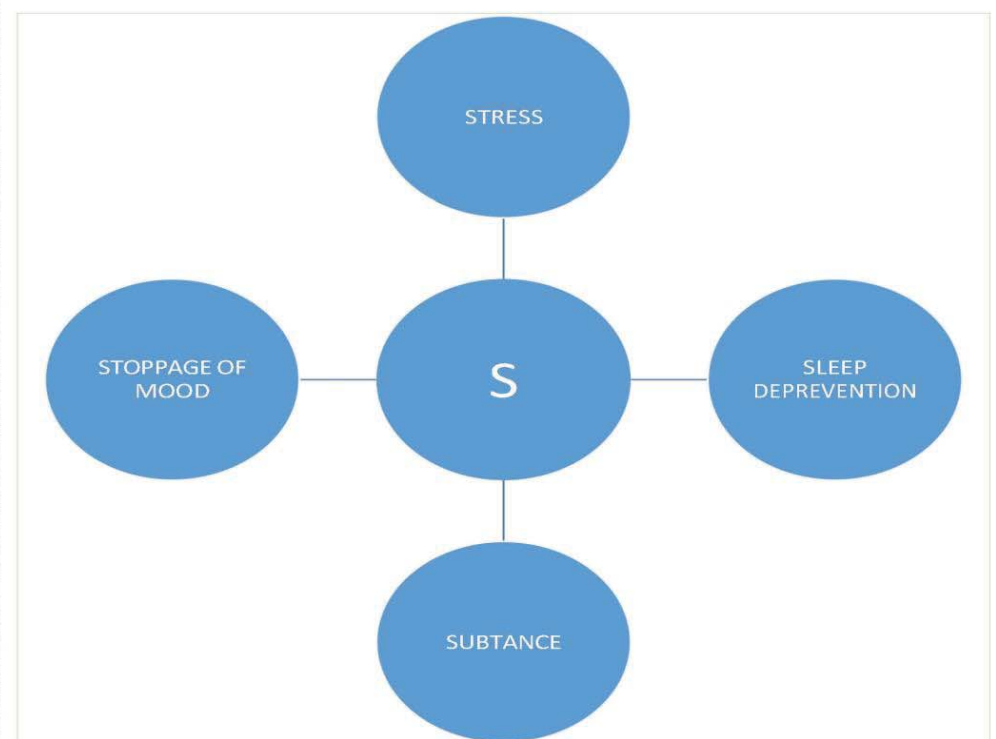
VOLPORATE



BENZODIAZEPINES ACID



CARBOMAZEPHINE



SIDE EFFECT OF MEDICINE

- Nausea
- Vomiting
- Dizziness
- Tremors
- Headaches